

Novel strategies to target chemoresistant triple-negative breast cancer

Jaganathan Venkatesh^{1,2}, Arun K. Rishi^{1,2,3} and Kaladhar B. Reddy^{3,4}

¹ John D. Dingell VA Medical Center, Wayne State University, Detroit, MI, USA

² Department of Oncology, Wayne State University, Detroit, MI, USA

³ Karmanos Cancer Institute, Wayne State University, Detroit, MI, USA

⁴ Department of Pathology, Wayne State University, Detroit, MI, USA

Correspondence to: Kaladhar B. Reddy, **email:** kreddy@med.wayne.edu

Keywords: Cell cycle and apoptosis regulator 1 (CARP-1), cancer stem cells, CFM-4.16, apoptosis, triple-negative breast cancer

Received: May 23, 2020

Accepted: July 17, 2020

Published: July 22, 2020

Copyright: Venkatesh et al. This is an open-access article distributed under the terms of the Creative Commons Attribution License 3.0 (CC BY 3.0), which permits unrestricted use, distribution, and reproduction in any medium, provided the original author and source are credited.

ABSTRACT

Previous studies from our group and others have shown that current drug treatment(s) strategies eliminate bulk of tumor cells (non-CSCs) but it had a minimal effect on cancer stem cells (CSCs) leading to resistance and tumor recurrence. We studied the effects of CFM-4.16 (CARP-1 functional mimetic) and/or cisplatin on four Triple-negative breast cancer (TNBC) MDA-MB-468, MDA-MB-231, CRL-2335 and BR-1126, two cisplatin resistant CisR/MDA-231 and CisR/MDA-468 and cancer stem cells (CSCs) from resistant cell lines. TNBC cells treated with CFM-4.16 plus cisplatin inhibited the expression of FZD8, LRP6 and c-Myc and significantly enhanced cell death in all the cell lines by ~70%-80% compared with the control(s). When Cisplatin resistant CisR/MDA-231 and CisR/MDA-468 were treated with CFM-4.16 plus cisplatin, they also showed a reduction in FZD8 and LRP6 and increased apoptosis compared to control group. Similarly, CFM-4.16 plus cisplatin treatment reduced mammospheres formation abilities of CSCs by 80-90% compared to control group, increased PARP cleavage and apoptosis. Data shows CFM-4.16 plus cisplatin treatment significantly increased apoptosis/cell death in parental, cisplatin resistant and CSCs. Taken together the data suggests that FZD8-mediated Wnt-signaling plays a major role in mediating CSCs growth and resistance to chemotherapy and its inhibition enhances the chemotherapeutic response in TNBC.

INTRODUCTION

Triple-negative breast cancer (TNBC) continues to be a major health problem worldwide despite recent advances in its diagnosis and treatment. Chemotherapy is currently the only systemic treatment option for TNBC, but optimal treatment protocols are yet to be established [1, 2]. Taxane and anthracycline-based regimens represent the mainstay in TNBC therapy, while platinum-based chemotherapy has shown promising results in the neoadjuvant and metastatic settings [1]. Despite the aggressive nature of TNBC, 20% of patients present a pathologic complete response (pCR) after neoadjuvant chemotherapy [3]. The differences in clinical outcomes following neoadjuvant treatment imply that a subset

of TNBCs is sensitive to chemotherapy while others become resistant during treatment or are intrinsically less susceptible. In breast cancer, both *in vivo* and patient data showed a substantial increase in cancer stem cells (CSC) in the residual tumors following treatment with conventional chemotherapy [4, 5]. Many studies support the notion of CSC importance in TNBC, such as the positive correlation observed between the expression of CSC markers (CD44, ALDH1) and lower survival rates of TNBC patients [6, 7]. Accumulating data also suggested the chemoresistant CSCs may be a major factor in TNBC relapse [8, 9]. We postulate inhibition of factors crucial for CSC maintenance such as Wnt-signaling can sensitize TNBC cells to chemotherapy.

There is compelling evidence indicating that aberrant

activation of Wnt/ β -catenin signaling leads to mammary carcinogenesis [10-12]. Enhanced nuclear/cytoplasmic β -catenin staining was found in ~ 60% of human breast cancer tissues [12, 13] suggesting that Wnt-signaling is activated in these tumors. Overexpression of Wnts and FZDs or constitutively active FZD regulates various processes, which play a major role in tumor growth, CSCs and metastasis [14-16]. Frizzled-8 receptor (FZD8) expression was significantly higher in human breast cancer tissues compared with the adjacent normal tissues, and higher expression of FZD8 was closely correlated with lymph node metastasis [17]. We have previously shown that residual tumors that survived chemotherapy show increased FZD8 and CSCs in TNBC tumors and cell lines compared to control group [5]. Clinically Low-density lipoprotein receptor-related protein 6 receptor (LRP6) is an essential Wnt co-receptor of the Wnt/ β -catenin signaling pathway. LRP6 was shown to be significantly elevated in ~25% of breast cancers more so in TNBC than other types of breast cancer [18]. However, mutations in Wnt pathway components such as Adenomatous polyposis (APC), *ctnnb1* (encoding β -catenin), Axin, etc., are rarely detected in human breast cancer [10, 13, 19]. LRP6, but not LRP5, is frequently up-regulated in human breast carcinomas [18]. Together, these data suggested that Wnt/ β -catenin signaling mediated through FZD8 and LRP6 plays a major role in human breast cancers, drug resistance and metastasis [2, 14, 18, 20].

Cell cycle and apoptosis regulator 1 (CARP-1/CCAR1) is a peri-nuclear phospho-protein, that regulates cell growth and apoptosis signaling in a variety of cancer cells [21, 22]. CARP-1 expression is often elevated in cells experiencing stress due to growth factor withdrawal or chemotherapy-induced cell cycle arrest and apoptosis [21, 22]. Knockdown of CARP-1 resulted in resistance

to apoptosis by ADR or EGFR tyrosine kinase inhibitors demonstrating the requirement of CARP-1 in cell growth inhibition and apoptosis signaling by these agents [21-23]. Breast tumors have been shown to have much lower CARP-1 compared to surrounding tissues. A chemical biology based high-throughput screening of a chemical library resulted in identification of a number of novel, small molecular inhibitors of CARP-1 binding with APC/C subunit of APC2 [24]. It was previously shown that CFM-4 is a CARP-1 functional mimetics (CFMs), and blocks its interaction with APC2, cause G2M cell cycle arrest, and inhibits cell growth by inducing apoptosis in various cancers. In contrast, CFM-4 treatment of an immortalized non-cancerous cell line MCF10A had a minimal effect on growth [24, 25]. Previous studies have also found that CFM-4 analog and CFM-4.16 binds with CARP-1, and causes elevated levels of CARP-1, stimulates apoptosis [24, 26, 27].

RESULTS

CFM-4.16 plus cisplatin enhances cell death in TNBC cell lines

We used four cell lines; three TNBC cell lines MDA-MB-468, MDA-MB-231, CRL-2335 and one BR-1126 (PDX derived TNBC cell line) to determine the effect of CFM-4.16, cisplatin, or combination on cell death. The MTT data indicate that CFM-4.16 or cisplatin induced approximately 30%-50% cell death in TNBC cell lines. However, combination of CFM-4.16 plus cisplatin enhanced cell death to approximately ~80% in TNBC cell lines (Figure 1). Our group and others have previously

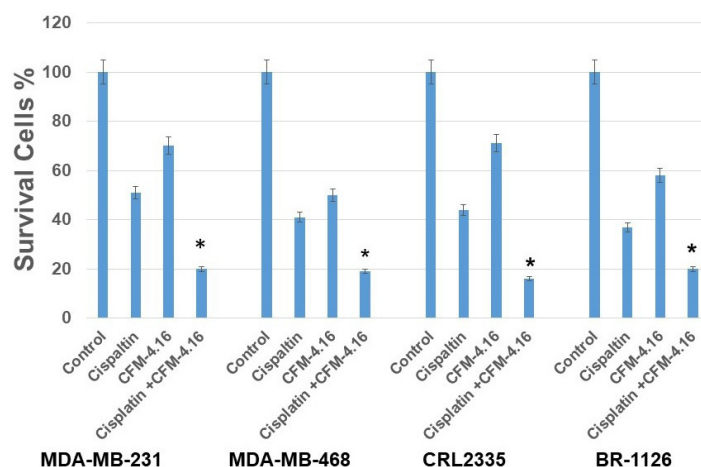


Figure 1: CFM-4.16 plus cisplatin treatment resulted in a significantly enhanced cell death in multiple TNBC cell lines: MDA-MB-231, MDA-MB-468, CRL2335 and BR-1126 (PDX derived TNBC cell line) were treated with CFM-4.16 (10 μ M), cisplatin (10 μ g/ml) or CFM-4.16 (10 μ M) plus cisplatin (10 μ g/ml) for 24 hours. Cell viability was then analyzed by MTT method. CFM-4.16 plus cisplatin treatment significantly inhibited MDA-MB-231, MDA-MB-468, CRL2335 and BR-1126 compared to their control group (* p < 0.05). Each point represents the mean + S.E. of triplicate determination.

shown that Wnt-signaling plays a major role in tumor growth and drug resistance in TNBC [5, 28-31]. Western blot analysis showed that cisplatin had varying levels of inhibition(s) on FZD8, LRP6 and c-Myc. In contrast, CFM-4.16 treatment shows consistent protein reduction in FZD8, LRP6 and c-Myc. However, combination of CFM-4.16 plus cisplatin treatment resulted in consistent reduction in all of the above proteins (Figure 2). Taken together, these data suggest that CFM-4.16 plus cisplatin treatment had a significant effect in reducing levels of major Wnt-signaling proteins and this leads to enhanced cell death in all the four TNBC cell lines.

Effect of CFM-4.16 plus cisplatin on cisplatin-resistant TNBC cell lines

Cisplatin is one of the most successful anticancer agents used in TNBC and other tumors [32, 33]. Overcoming resistance to chemotherapeutic agents would represent a major advance in clinical management of breast cancer. We tested the efficacy of CFM-4.16 plus cisplatin on cisplatin resistant TNBC cells. We developed a cisplatin resistance phenotype in MDA-231 and MDA-468 TNBC cells, and this was achieved through growth of the cells over time in the presence of increasing concentrations of cisplatin. To determine if CFM-4.16 plus cisplatin enhances cell death in cisplatin-resistant MDA-MB-468 (CisR/MDA-468) and cisplatin-resistant MDA-MB-231 (CisR/MDA-231) cells, we treated cells with cisplatin, CFM-4.16 or combination for 24-hours. The data in Figure 3A and 3C indicates that cisplatin had no or minimal effect on FZD8 or LRP6. However, CFM-

4.16 significantly inhibited FZD8 in CisR/MDA-468 cells but has a moderate effect on CisR/MDA-231 cells. However, combination of CFM-4.16 plus cisplatin had a significant effect on FZD8 and LRP6 reduction compared to control group, and significantly enhanced apoptosis (Figure 3B&3D). These results suggest that CFM-4.16 plus cisplatin treatment overcomes cisplatin resistance in TNBC cells.

CFM-4.16 plus cisplatin on CSCs derived from cisplatin-resistant TNBC cells

Emerging evidence suggests that CSCs, which have tumor-initiating potential and self-renewal capacity, may be responsible for poor outcome by promoting therapy resistance, recurrence and metastasis [5, 9, 34, 35]. It was previously shown that the cell fraction with the CD44+/CD24-/Lin- phenotype in breast cancer patient tissues could recapitulate tumor burden in mice [36]. Later, it was also shown that a subpopulation of cells with high aldehyde dehydrogenase (ALDH) activity could initiate tumors *in vivo* [37]. Since then, the CD44+/CD24- phenotype and high ALDH activity have become the “gold standard” signature for breast cancer stem cells. Different group, including our group have shown that chemotherapy can eliminate the bulk of tumor cells (non-CSCs), but it failed to eliminate CSCs, thereby making these cells the leading cause of therapy resistance and recurrence [5, 34, 38, 39].

One of the major characteristic features of CSCs is their ability to form mammospheres in suspension culture [39, 40]. We have previously shown that after two

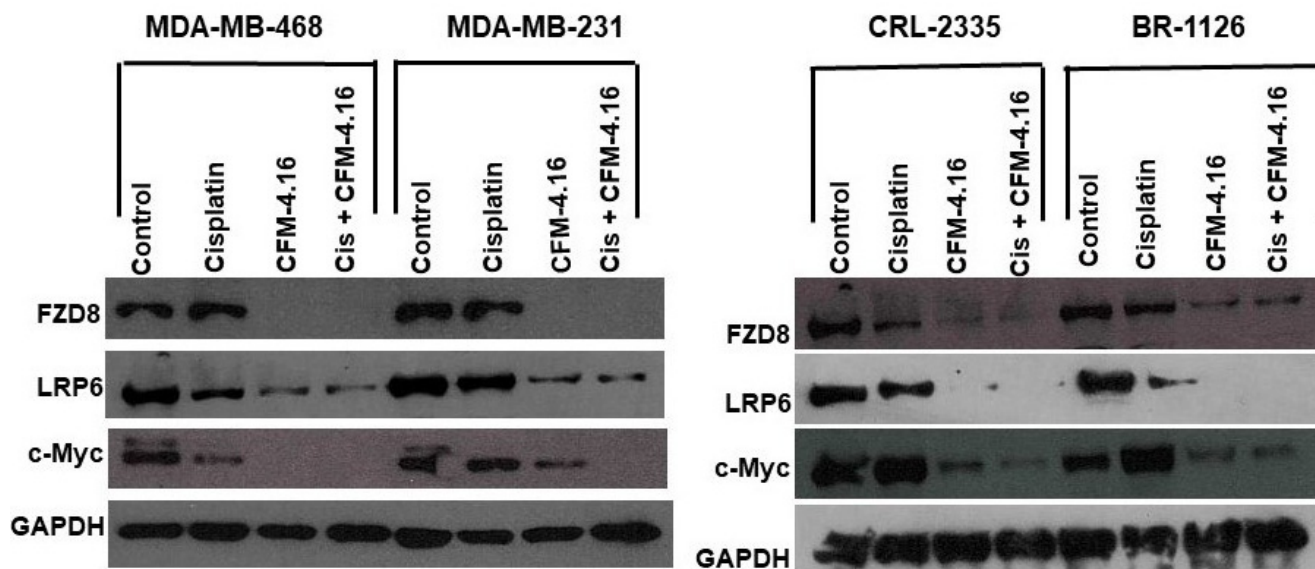


Figure 2: Expression of FZD8, LRP6 and c-Myc in MDA-MB-231, MDA-MB-468, CRL2335 and BR-1126 TNBC cells treated with CFM-4.16, cisplatin or CFM-4.16 plus cisplatin for 24 hours. Whole-cell extracts were prepared and analyzed for FZD8, LRP6 and c-Myc by Western blotting. Equal protein loading was compared with that of GAPDH.

passages of mammospheres in culture, cells derived from mammospheres showed ~90% positivity for ALDH by flow cytometer, and these cells have the ability to form tumors in mice (data not shown). In this study, we used cells derived from mammospheres after two passages as CSCs. We investigated the effect of cisplatin, CFM-4.16 or its combination on mammosphere formation using CisR/MDA-231 and CisR/MDA-468 TNBC cell lines. The results presented in Figure 4 shows that cisplatin treatment reduced mammosphere formation ability of CSCs by ~30% compared to an untreated control group in CisR/MDA-231 cells, CFM-4.16 treatment reduced mammosphere formation by ~55%, and the combination of CFM-4.16 plus cisplatin reduced mammosphere formation ability by ~85% compared to control group. Similarly, in CisR/MDA-468 derived CSCs, cisplatin

treatment reduced mammosphere formation ability by ~36%, CFM-4.16 by ~59% and combination reduced mammosphere formation ability by 89% (Figure 4).

The effect of CFM-4.16, cisplatin or CFM-4.16 plus cisplatin treatment was also examined on Wnt-signaling proteins and apoptosis in CSCs derived from cisplatin resistant TNBC cells. The results in Figure 5 show that cisplatin had minimal inhibition on FZD8, LRP6 protein levels in CisR/MDA-231 and CisR/MDA-468 derived CSCs. CFM-4.16 treatment, on the other hand, causes a reduction in FZD-8, LRP6 proteins in both CisR/MDA-231 and CisR/MDA-468 derived CSCs. However, combination of CFM-4.16 plus cisplatin treatment resulted in consistent reduction in all the proteins (Figure 5). Western blot(s) showed a significant increase in PARP cleavage (Figure 6A) and cell death in CSCs (Figure

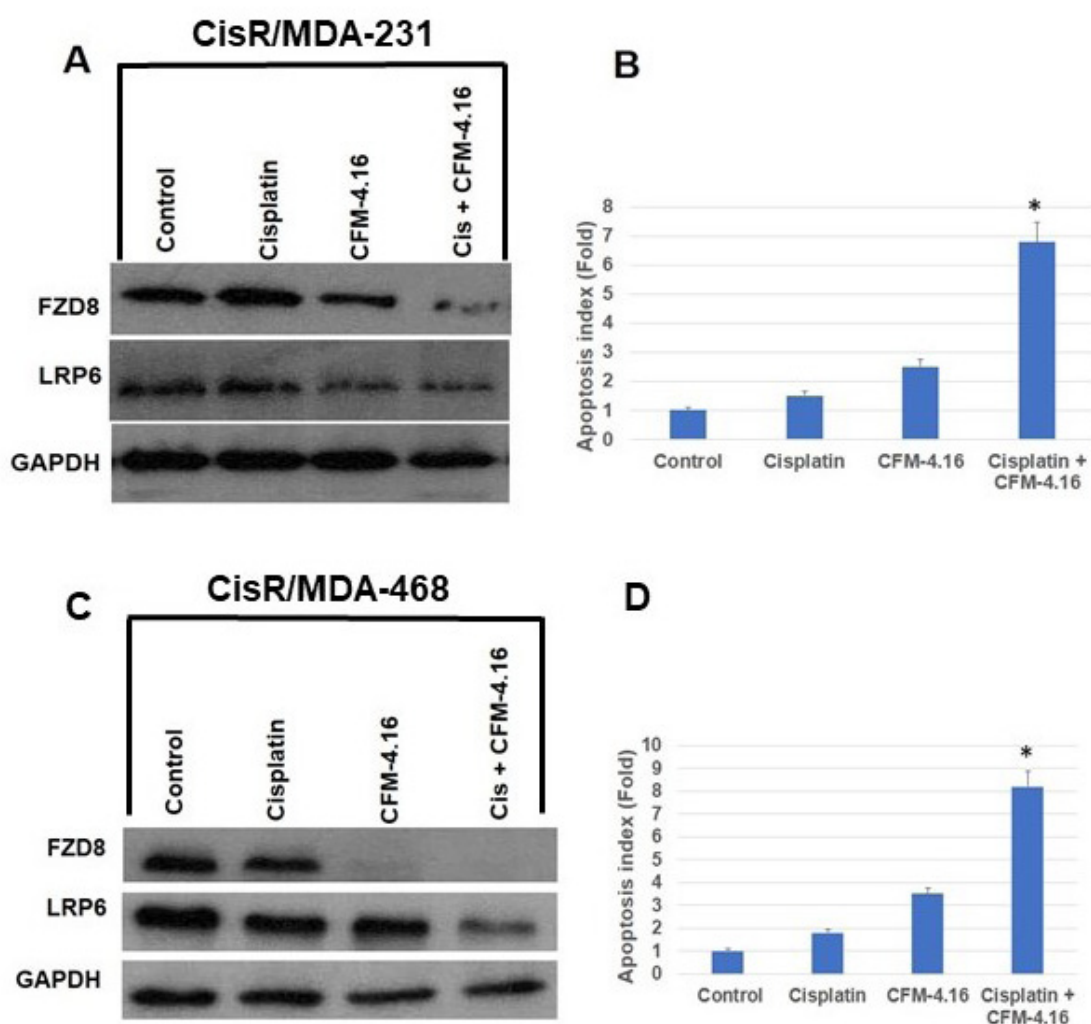


Figure 3: Effect of CFM-4.16 plus cisplatin on CisR/MDA-231 and CisR/MDA-468 TNBC cells. CisR/MDA-231 and CisR/MDA-468 TNBC cells were treated with CFM-4.16 (10 μ M), cisplatin (10 μ g/ml) or CFM-4.16 (10 μ M) plus cisplatin (10 μ g/ml) for 24 hours. Whole-cell extracts were prepared and analyzed for FZD8 and LRP6 by Western blotting **A., C.** Equal protein loading was compared with that of GAPDH. Under similar conditions, apoptosis was quantified by Cell Death ELISA and normalized to values measured in untreated cells. CisR/MDA-231 and CisR/MDA-468 TNBC cells showed a significant increase in apoptosis in the presence of CFM-4.16 plus cisplatin in comparison to untreated cells **B., D.** (* $p < 0.001$). Data are the mean + SE of triplicate determinations.

6B) derived from cisplatin-resistant TNBC cell lines. Taken together, these data suggest that CFM-4.16 plus cisplatin treatment can reduce FZD8, and LRP in parental, cisplatin resistant and CSCs derived from cis-resistant TNBC cells and also increase apoptosis/cell death. These findings suggest that CFM-4.16 plus cisplatin therapy has the potential to improve therapeutic outcome in TNBC patients.

DISCUSSION

Abnormal activation of Wnt-signaling has been implicated in the regulation of CSCs including breast cancer, lung cancer, colorectal cancer, etc. [11, 12, 41, 42]. CSCs were shown to be responsible for tumor initiation, growth, chemotherapeutic resistance and recurrence [9, 34, 43, 44]. The propensity of CSCs to resist chemotherapy, thereby maintaining a pool of tumorigenic cells from which tumor(s) can reoccur [5, 45, 46]. We hypothesized that treatment strategies that target both CSCs and non-CSC (bulk of the tumor) could improve therapeutic outcome. The signaling pathways that regulate self-renewal and differentiation of CSCs are not well understood. A number of studies support functional versatility of Wnt/ β -catenin signaling in CSCs

and non-CSC's [2, 28, 29, 43]. The results from the present investigations clearly show that MDA-MB-231, MDA-MB-468, CRL-2335 and BR-1126 TNBC cells treated with CFM-4.16 plus cisplatin show significantly enhanced cell death (~ 70-80%) as compared to untreated cells (Figure 1). The results from this study have also shown that treatment with CFM-4.16 alone caused significant reduction in FZD8, LRP6 and c-myc (Figure 2) and induced ~30-40% cell death. Cisplatin alone had a marginal effect on FZD8 and LRP6 and induced ~ 40-50% cell death. However, combination of cisplatin plus CFM-4.16 increased the cell death to ~70-80% in all the four TNBC cell lines. Taken together, the data suggest the possibility that restoration of CARP-1 through functional mimetic CFM-4.16 reduces Wnt-signaling and significantly increases apoptosis in the presence of cisplatin.

Chemotherapy resistance presents a significant hurdle for successful treatment in TNBC. Platinum-based chemotherapy has shown promising results in TNBC, they frequently develop chemoresistance [2, 9]. To determine if CFM-4.16 plus cisplatin enhances cell death in cisplatin-resistant MDA-MB-468 (CisR/MDA-468) and cisplatin-resistant MDA-MB-231 (CisR/MDA-231) cells were treated with cisplatin, CFM-4.16 or combination. Our

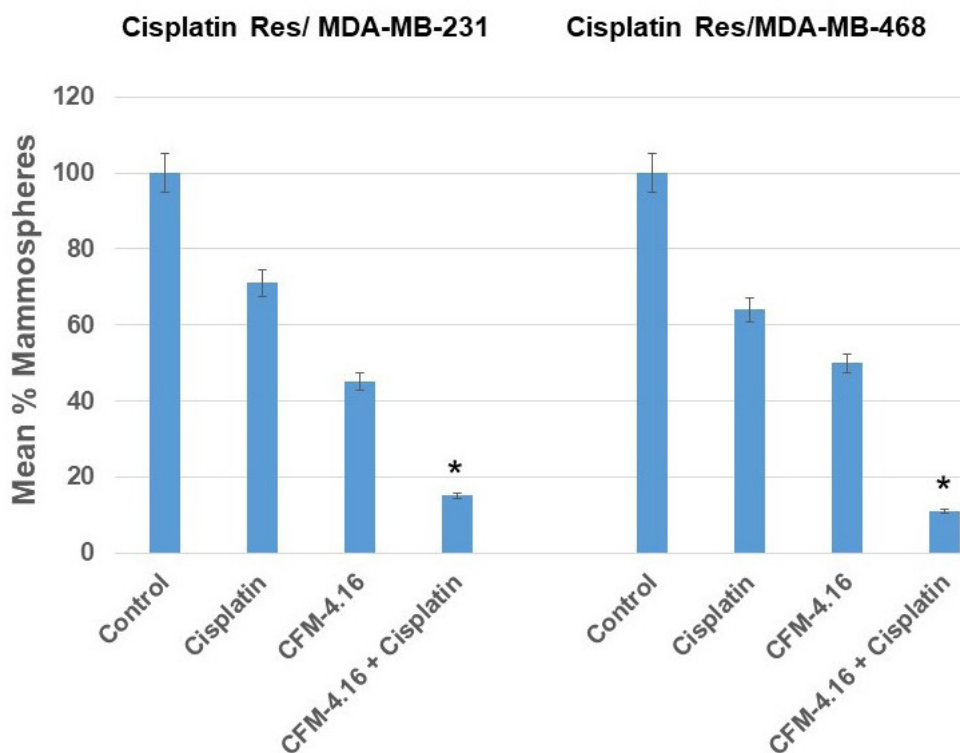


Figure 4: Effect of CFM-4.16 plus cisplatin treatment on the ability of cancer stem cells to form mammospheres. The *in vitro* mammospheres was quantified by counting the mammospheres after treatment with CFM-4.16, cisplatin or CFM-4.16 plus cisplatin compared to controls. CFM-4.16 plus cisplatin treatment had maximum inhibition on cancer stem cell's ability to form mammospheres in CisR/MDA-231 and CisR/MDA-468 derived CSCs compared to their control group (* $p < 0.05$). Data are mean + SE of triplicate determinations.

data shows a combination of CFM-4.16 plus cisplatin significantly reduced Wnt-signaling through inhibition of FZD8 and LRP6 and enhanced apoptosis (Figure 3B&3D). These results suggest that CFM-4.16 plus cisplatin treatment overcomes cisplatin resistance in TNBC cells.

Successive studies detected a higher percentage of CSCs in primary breast tumors following neoadjuvant chemotherapy [4, 5, 8]. Different groups, including our group showed that CSCs are resistant to chemotherapy, leading to enrichment of CSCs in residual tumor both *in vitro* and *in vivo* [4, 5]. Wnt-signaling was implicated in CSC's self-renewal. Therefore, targeting Wnt-signaling in CSCs may be a promising therapeutic approach for TNBC. To test this premise we treated the CSCs derived from cisplatin-resistant cells with CFM-4.16, cisplatin and CFM-4.16 plus cisplatin and determined the mammosphere formation. This assay has been used as a surrogate reporter of CSCs activity in mammary gland [36, 40, 47]. The results from this study showed a combination of CFM-4.16 plus cisplatin reduced mammosphere formation ability by ~85-90% when compared to control group (Figure 4). Our data also showed that proteins extracted from the treated mammosphere had significant reduction in Wnt-signaling proteins FZD8, LRP6, c-Myc and increased PARP cleavage leading to apoptosis in CSCs compared to control group.

Previous studies from our group and others have shown that activation of Wnt-signaling leads to increased expression of c-Myc through β -catenin [19–21]. We investigated the role of c-Myc in regulation of Wnt signaling and its effect on CSCs and response

to chemotherapy. We overexpressed c-Myc in MDA-MB-468 (Myc/MDA-468) and MDA-MB-231 (Myc/MDA-231) TNBC cells. Myc overexpression resulted in a significant increase in FZD8 compared to vector transfected control cells [31]. Based on these observations and others, we propose that a positive feedback loop exists between Myc, and FZD8 breast cancer cells. Myc also controls the expression of numerous genes, which are essential to regulate EMT and/or CSCs. Our data showed over expression of c-Myc in the Myc/MDA-468 cells increased expression of ALDH, a marker for CSCs, while it had a minimal effect on EMT regulating proteins such as Vimentin and Zeb 1. In contrast, Myc/MDA-231 cells showed increased levels of Vimentin, and Zeb 1 a marker for EMT changes when compared to vector-expressing controls, and ALDH levels were undetectable by Western blot analysis [31]. In addition, we have also demonstrated that Myc/MDA-468 cells, exhibit higher CSCs levels and are resistant to cisplatin plus Iniparib (PARP inhibitor), paclitaxel, docetaxel and iniparib alone. However, Myc/MDA-231 cells that showed increased EMT changes were sensitive to combination therapy of cisplatin plus Iniparib. Interestingly, Myc/MDA-231 cells were resistant to chemotherapeutic agents paclitaxel, docetaxel and iniparib that are commonly used for clinical practice to treat breast cancer [31]. In contrast, combination of CFM.4.16 and cisplatin significantly increased apoptosis in both c-Myc/MDA-468 and c-Myc/MDA-231 compared to respective vector expressing control cells. This data suggests CFM-4.16 caused reduction in FZD8, LRP6 and c-Myc sensitizes cells to cisplatin.

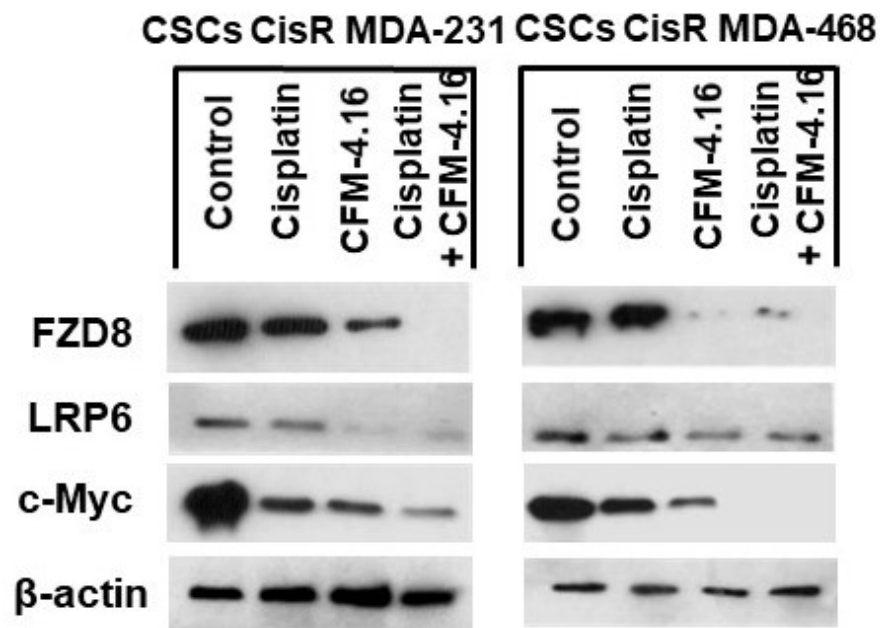


Figure 5: Effect of CFM-4.16 plus cisplatin treatment on the expression of FZD8, LRP6 and c-Myc in CisR/MDA-231 and CisR/MDA-468 derived cancer stem cells. Cell extracts were prepared and analyzed for FZD8, LRP6 and c-Myc by Western blotting. Equal protein loading was compared with that of β -actin.

Many studies support the notion of CSCs significance in TNBC, such as the positive correlation observed between the expression of CSC markers (CD44, ALDH1) and lower survival rates of TNBC patients [6, 8]. Eradication and/or reduction of CSCs may represent an effective anticancer therapeutic strategy. Extensive literature highlights the key role of deregulated Wnt/ β -catenin signaling in TNBC and it's more likely to develop chemotherapeutic resistance and distant metastases [5, 48, 49]. Recently numerous Wnt signaling inhibitors, including biological and small molecular agents such as PRI-724 (Dishevelled inhibitor), Ipafricept (Fc-Frizzled 8 receptor), Vantictuman (Anti-Frizzled 7 receptor), LGK974 (Porcupine inhibitor), CGP049090 (β -catenin-TCF), etc [44, 50]. However, due to the inherent heterogeneity of CSCs the targeting a single molecule may not be an effective strategy. Markers expressed on CSCs may also be displayed by normal stem cells, which limits accuracy of targeted treatment in TNBC. Therefore, we targeted Wnt-signaling by combination therapy, which was efficient in elimination both CSCs and non-CSC's (bulk of tumor cells). Considering the complexity and diversity of TNBC, eradicating all cancer cells using one strategy is challenging task. Thus, using a combination treatment with CFM-4.16 plus cisplatin induce the synergistic effects that induced apoptosis in non-CSCs, cisplatin resistant-CSCs and -tumor cells. Recent studies suggest that CSCs are enriched after chemotherapy because CSCs are resistant

to conventional chemotherapy leading to recurrence and eventual metastasis. In conclusion, our data show CFM-4.16 plus cisplatin treatment increases apoptosis/cell death in parental TNBC, cisplatin resistant and CSCs cells derived from cisplatin resistant TNBC cells. Overcoming resistance to chemotherapeutic agents would represent a major advance in clinical management of breast cancer. Taken together the data suggest that FZD8-mediated Wnt-signaling plays a major role in mediating CSCs growth and resistance to chemotherapy and inhibition of this pathway enhances the chemotherapeutic response in TNBC.

MATERIALS AND METHODS

Cell lines and reagents

The human triple-negative breast cell lines CRL2335, MDA-MB-231, MDA-MB-468 cells were obtained from the American Type Culture Collection (ATCC). BR-1126 (PDX derived TNBC cells) obtained from Dr. Rishi (VA and Karmanos Cancer Institute, Wayne State University). Cells were maintained in DMEM culture media. All cells obtained from ATCC were immediately expanded and frozen down such that all cell lines could be restarted every 3-4 months from a frozen vial of

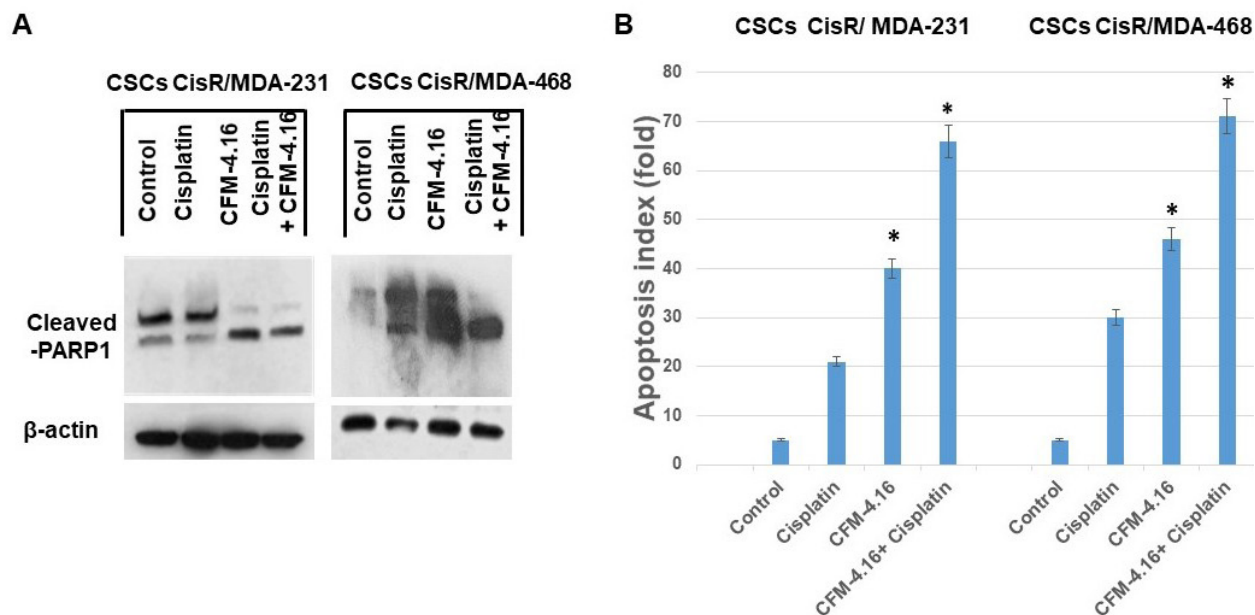


Figure 6: CFM-4.16 plus cisplatin increases PARP-cleavage and apoptosis in CisR/MDA-231 and CisR/MDA-468 derived cancer stem cells. CisR/MDA-231 and CisR/MDA-468 derived cancer stem cells were treated with CFM-4.16, cisplatin or CFM-4.16 plus cisplatin for 24 hours. **A.** Cancer stem cell extracts were prepared and analyzed for PARP cleavage by Western blotting. Equal protein loading was compared with that of β -actin. **B.** Under similar conditions, apoptosis was quantified by Cell Death ELISA and normalized to values measured in untreated cells. Cancer stem cells derived from CisR/MDA-231 and CisR/MDA-468 TNBC cells showed a significant increase in apoptosis in the presence of CFM-4.16 plus cisplatin in comparison to untreated cells ($*p < 0.001$). Data are the mean + SE of triplicate determinations.

the same batch of cells, and authentication was done. Cisplatin was purchased from Sigma (St. Louis, MO). CFM-4.16 was obtained from Dr. Rishi (Karmanos Cancer Institute). Reagents for protein analysis and protein gel electrophoresis were obtained from Bio-Rad (Hercules, CA). All other chemicals, unless otherwise specified, were purchased from Sigma in the highest suitable purities.

Generation of drug-resistant TNBC cells

Human TNBC MDA-MD-231 and MDA-MB-468 were cultured in the chronic presence of cisplatin. They were initially cultured in the presence of 1 µg/ml cisplatin for 2-3 weeks, and the dose was escalated to 4 µg/ml over a period of 3-4 weeks for each dose until resistance developed, and cells became adapted to routine culture in the presence of cisplatin.

Mammosphere culture

Mammosphere culture was performed as described by Dontu *et al* (19) with minor modification. In brief, *cis*/MDA-231 or *cis*/MDA-468 mammospheres were cultured in suspension (1,000 cells/ml) in serum-free DMEM media, supplemented with B27 (1:100; Invitrogen), N2 (1:50; Invitrogen) and 10 ng/ml of EGF. For mammosphere formation assay, cultured mammospheres were enzymatically dissociated by incubation in a trypsin-EDTA solution (Invitrogen) at 37°C. Cells were plated at 4000 cells per well of six-well ultra low-attachment plate (Corning, MA). Mammospheres were counted after 5-7 days. Mammosphere counting: Mammospheres were centrifuged and transferred to a 96-well flat bottomed plate in 100 µl of the media and counted using a microscope under low magnification. Experiments were done in triplicate.

MTT assay

In brief, 5×10^4 cells were added in 96-well plate. After 24 h, cells were treated with CFM-4.16 (10 µM) plus cisplatin (10 µg/ml), CFM-4.16 (10 µM) plus cisplatin (10 µg/ml) another 24 h. Following treatments, 100 µl of 3-(4,5-dimethylthiazol-2-yl)-2,5-diphenyltetrazolium bromide (MTT) (1 mg/ml) was added into each sample and incubated for 3 h under 5% CO₂ and 37°C. The cell viability was measured by MTT, which is converted by succinate dehydrogenase in mitochondria of viable cells to yield a purple formazan dye. The formazan dye was dissolved in dimethyl sulfoxide (DMSO) and measured by absorption at a wavelength of 550 nm using Benchmark® microplate reader from Bio-Rad.

Western blot analysis

TNBC or CSCs derived from TNBC cells were treated with CFM-4.16 (10 µM), cisplatin (10 µg/ml), or CFM-4.16 plus cisplatin for 24 h. Cells were lysed and Western blotting was performed as described previously [31] using a standard protocol. In brief, cell extracts were obtained by lysing the cells in RIPA buffer (20 mM Hepes, 100 mM NaCl, 0.1% SDS, 1% Nonidet P-40, 1% deoxycholate, 1 mM Na₃VO₄, 1 mM EGTA, 50 mM NaF, 10% glycerol, 1 mM EDTA, 1 mM phenylmethylsulfonyl fluoride, and 1x protease inhibitor mixture) (all reagents from Sigma). Samples containing 30-50 µg of total protein was electrophoresed on 8 % SDS-polyacrylamide gels and transferred to PVDF membrane by electroblotting. Membranes were probed with specific antibodies against FZD8 (Aviva System Biology), LRP6, c-Myc, GAPDH (Cell Signaling Technology), β-actin (ThermoFisher) followed by HRP-conjugated mouse or rabbit secondary antibodies (Amersham) accordingly. The specific bands were developed on autoradiography films by treatment of the membranes with an enhanced chemiluminescent substrate (Pierce).

Apoptosis assay

Apoptosis was assessed using the Cell Death Detection ELISAplus kit (Sigma-aldrich) according to the manufacturer's instructions. In brief, mammospheres were dissociated and 2×10^4 cells were plated in 96 well ultra-low attachment plates. Cells were treated with CFM-4.16, cisplatin or CFM-4.16 plus cisplatin for 24 h. Apoptosis was quantified by ELISA and normalized to values measured in untreated cells. Data are mean + SE of triplicate determination.

Statistical analysis

All data are expressed as mean ± SEM, and statistically analyzed using unpaired Student's *t*-test. Differences were considered statistically significant when $P < 0.05$.

Abbreviations

ADR: Adnamycin; CARP-1: Cell cycle and apoptosis regulator 1; CSCs: Cancer stem cells; CFM-4.16: CARP-1 functional mimetics; TNBC: Triple-negative breast cancer; FZD-8: Frizzled receptors 8; LRP-6: Low-density lipoprotein receptor-related protein 6 receptor; CisR: Cisplatin resistant cells; PDX: Patient derived xenografts; ALDH: Aldehyde dehydrogenase; non-CSC: Non-Cancer stem cells (bulk of tumor cells)

Author contributions

Conceptualization: KBR, Data curation: KBR, AKR, Formal analysis: KBR, Funding acquisition: KBR, AKR, Investigation: KBR, JV, AKR, Methodology: KBR, JV, Project administration: KBR, Resources: KBR, AKR, Software: KBR, JV, Writing – original draft: KBR, Writing – review & editing: KBR, AKR.

COMPETING INTERESTS

The authors declare that they have no competing interests.

FUNDING

This work was supported by Department of Pathology, WSU Boost grant(to K.B.R.), Department of Veteran Affairs Merit Renew(K.B.R.).

REFERENCES

1. Lebert JM, Lester R, Powell E, Seal M, McCarthy J. Advances in the systemic treatment of triple-negative breast cancer. *Curr Oncol*. 2018; 25: S142-S50. <https://doi.org/10.3747/co.25.3954>.
2. Reddy KB. Triple-negative breast cancers: an updated review on treatment options. *Curr Oncol*. 2011; 18: e173-9.
3. Liedtke C, Mazouni C, Hess KR, Andre F, Tordai A, Mejia JA, Symmans WF, Gonzalez-Angulo AM, Hennessy B, Green M, Cristofanilli M, Hortobagyi GN, Pusztai L. Response to neoadjuvant therapy and long-term survival in patients with triple-negative breast cancer. *J Clin Oncol*. 2008; 26: 1275-81. <https://doi.org/10.1200/JCO.2007.14.4147>.
4. Creighton CJ, Li X, Landis M, Dixon JM, Neumeister VM, Sjolund A, Rimm DL, Wong H, Rodriguez A, Herschkowitz JI, Fan C, Zhang X, He X, et al. Residual breast cancers after conventional therapy display mesenchymal as well as tumor-initiating features. *Proc Natl Acad Sci U S A*. 2009; 106: 13820-5. <https://doi.org/10.1073/pnas.0905718106>.
5. Yin S, Xu L, Bonfil RD, Banerjee S, Sarkar FH, Sethi S, Reddy KB. Tumor-initiating cells and FZD8 play a major role in drug resistance in triple-negative breast cancer. *Mol Cancer Ther*. 2013; 12: 491-8. <https://doi.org/10.1158/1535-7163.MCT-12-1090>.
6. Ma F, Li H, Li Y, Ding X, Wang H, Fan Y, Lin C, Qian H, Xu B. Aldehyde dehydrogenase 1 (ALDH1) expression is an independent prognostic factor in triple negative breast cancer (TNBC). *Medicine (Baltimore)*. 2017; 96: e6561. <https://doi.org/10.1097/MD.0000000000006561>.
7. Wang H, Wang L, Song Y, Wang S, Huang X, Xuan Q, Kang X, Zhang Q. CD44(+)/CD24(-) phenotype predicts a poor prognosis in triple-negative breast cancer. *Oncol Lett*. 2017; 14: 5890-8. <https://doi.org/10.3892/ol.2017.6959>.
8. Lee HE, Kim JH, Kim YJ, Choi SY, Kim SW, Kang E, Chung IY, Kim IA, Kim EJ, Choi Y, Ryu HS, Park SY. An increase in cancer stem cell population after primary systemic therapy is a poor prognostic factor in breast cancer. *Br J Cancer*. 2011; 104: 1730-8. <https://doi.org/10.1038/bjc.2011.159>.
9. Nedeljkovic M, Damjanovic A. Mechanisms of Chemotherapy Resistance in Triple-Negative Breast Cancer-How We Can Rise to the Challenge. *Cells*. 2019; 8. <https://doi.org/10.3390/cells8090957>.
10. Brennan KR, Brown AM. Wnt proteins in mammary development and cancer. *J Mammary Gland Biol Neoplasia*. 2004; 9: 119-31. <https://doi.org/10.1023/B:JOMG.0000037157.94207.33>.
11. Li Y, Welm B, Podsypanina K, Huang S, Chamorro M, Zhang X, Rowlands T, Egeblad M, Cowin P, Werb Z, Tan LK, Rosen JM, Varmus HE. Evidence that transgenes encoding components of the Wnt signaling pathway preferentially induce mammary cancers from progenitor cells. *Proc Natl Acad Sci U S A*. 2003; 100: 15853-8. <https://doi.org/10.1073/pnas.2136825100>.
12. Nakopoulou L, Mylona E, Papadaki I, Kavantzias N, Giannopoulou I, Markaki S, Keramopoulos A. Study of phospho-beta-catenin subcellular distribution in invasive breast carcinomas in relation to their phenotype and the clinical outcome. *Mod Pathol*. 2006; 19: 556-63. <https://doi.org/10.1038/modpathol.3800562>.
13. Lin SY, Xia W, Wang JC, Kwong KY, Spohn B, Wen Y, Pestell RG, Hung MC. Beta-catenin, a novel prognostic marker for breast cancer: its roles in cyclin D1 expression and cancer progression. *Proc Natl Acad Sci U S A*. 2000; 97: 4262-6. <https://doi.org/10.1073/pnas.060025397>.
14. Anastas JN, Moon RT. WNT signalling pathways as therapeutic targets in cancer. *Nat Rev Cancer*. 2013; 13: 11-26. <https://doi.org/10.1038/nrc3419>.
15. Fodde R, Brabletz T. Wnt/beta-catenin signaling in cancer stemness and malignant behavior. *Curr Opin Cell Biol*. 2007; 19: 150-8. <https://doi.org/10.1016/j.ceb.2007.02.007>.
16. Kahn M. Wnt Signaling in Stem Cells and Cancer Stem Cells: A Tale of Two Coactivators. *Prog Mol Biol Transl Sci*. 2018; 153: 209-44. <https://doi.org/10.1016/bs.pmbts.2017.11.007>.
17. Jiang Q, He M, Guan S, Ma M, Wu H, Yu Z, Jiang L, Wang Y, Zong X, Jin F, Wei M. MicroRNA-100 suppresses the migration and invasion of breast cancer cells by targeting FZD-8 and inhibiting Wnt/beta-catenin signaling pathway. *Tumour Biol*. 2016; 37: 5001-11. <https://doi.org/10.1007/s13277-015-4342-x>.
18. Liu CC, Prior J, Piwnicka-Worms D, Bu G. LRP6 overexpression defines a class of breast cancer subtype and is a target for therapy. *Proc Natl Acad Sci U S A*. 2010; 107: 5136-41. <https://doi.org/10.1073/pnas.0911220107>.
19. Brown AM. Wnt signaling in breast cancer: have we come

- full circle? *Breast Cancer Res.* 2001; 3: 351-5.
20. Dent R, Trudeau M, Pritchard KI, Hanna WM, Kahn HK, Sawka CA, Lickley LA, Rawlinson E, Sun P, Narod SA. Triple-negative breast cancer: clinical features and patterns of recurrence. *Clin Cancer Res.* 2007; 13: 4429-34. <https://doi.org/10.1158/1078-0432.CCR-06-3045>.
 21. Rishi AK, Zhang L, Boyanapalli M, Wali A, Mohammad RM, Yu Y, Fontana JA, Hatfield JS, Dawson MI, Majumdar AP, Reichert U. Identification and characterization of a cell cycle and apoptosis regulatory protein-1 as a novel mediator of apoptosis signaling by retinoid CD437. *J Biol Chem.* 2003; 278: 33422-35. <https://doi.org/10.1074/jbc.M303173200>.
 22. Rishi AK, Zhang L, Yu Y, Jiang Y, Nautiyal J, Wali A, Fontana JA, Levi E, Majumdar AP. Cell cycle- and apoptosis-regulatory protein-1 is involved in apoptosis signaling by epidermal growth factor receptor. *J Biol Chem.* 2006; 281: 13188-98. <https://doi.org/10.1074/jbc.M512279200>.
 23. Kim JH, Yang CK, Heo K, Roeder RG, An W, Stallcup MR. CCAR1, a key regulator of mediator complex recruitment to nuclear receptor transcription complexes. *Mol Cell.* 2008; 31: 510-9. <https://doi.org/10.1016/j.molcel.2008.08.001>.
 24. Puliappadamba VT, Wu W, Bevis D, Zhang L, Polin L, Kilkuskie R, Finley RL, Jr., Larsen SD, Levi E, Miller FR, Wali A, Rishi AK. Antagonists of anaphase-promoting complex (APC)-2-cell cycle and apoptosis regulatory protein (CARP)-1 interaction are novel regulators of cell growth and apoptosis. *J Biol Chem.* 2011; 286: 38000-17. <https://doi.org/10.1074/jbc.M111.222398>.
 25. Muthu M, Cheriyan VT, Rishi AK. CARP-1/CCAR1: a biphasic regulator of cancer cell growth and apoptosis. *Oncotarget.* 2015; 6: 6499-510. <https://doi.org/10.18632/oncotarget.3376>.
 26. Ashour AE, Jamal S, Cheryan VT, Muthu M, Zoheir KM, Alafeefy AM, Abd-Allah AR, Levi E, Tarca AL, Polin LA, Rishi AK. CARP-1 functional mimetics: a novel class of small molecule inhibitors of medulloblastoma cell growth. *PLoS One.* 2013; 8: e66733. <https://doi.org/10.1371/journal.pone.0066733>.
 27. Muthu M, Somagoni J, Cheriyan VT, Munie S, Levi E, Ashour AE, Yassin AE, Alafeefy AM, Sochacki P, Polin LA, Reddy KB, Larsen SD, Singh M, et al. Identification and Testing of Novel CARP-1 Functional Mimetic Compounds as Inhibitors of Non-Small Cell Lung and Triple Negative Breast Cancers. *J Biomed Nanotechnol.* 2015; 11: 1608-27.
 28. Pohl SG, Brook N, Agostino M, Arfuso F, Kumar AP, Dharmarajan A. Wnt signaling in triple-negative breast cancer. *Oncogenesis.* 2017; 6: e310. <https://doi.org/10.1038/oncsis.2017.14>.
 29. Sidaway P. Wnt signalling induces resistance. *Nature Reviews Urology.* 2015; 12: 597. <https://doi.org/10.1038/nrurol.2015.244>.
 30. Tung EK, Wong BY, Yau TO, Ng IO. Upregulation of the Wnt co-receptor LRP6 promotes hepatocarcinogenesis and enhances cell invasion. *PLoS One.* 2012; 7: e36565. <https://doi.org/10.1371/journal.pone.0036565>.
 31. Yin S, Cheryan VT, Xu L, Rishi AK, Reddy KB. Myc mediates cancer stem-like cells and EMT changes in triple negative breast cancers cells. *PLoS One.* 2017; 12: e0183578. <https://doi.org/10.1371/journal.pone.0183578>.
 32. Kelland L. The resurgence of platinum-based cancer chemotherapy. *Nat Rev Cancer.* 2007; 7: 573-84. <https://doi.org/10.1038/nrc2167>.
 33. Siddik ZH. Cisplatin: mode of cytotoxic action and molecular basis of resistance. *Oncogene.* 2003; 22: 7265-79. <https://doi.org/10.1038/sj.onc.1206933>.
 34. Park SY, Choi JH, Nam JS. Targeting Cancer Stem Cells in Triple-Negative Breast Cancer. *Cancers (Basel).* 2019; 11. <https://doi.org/10.3390/cancers11070965>.
 35. Shibue T, Weinberg RA. EMT, CSCs, and drug resistance: the mechanistic link and clinical implications. *Nat Rev Clin Oncol.* 2017. <https://doi.org/10.1038/nrclinonc.2017.44>.
 36. Al-Hajj M, Wicha MS, Benito-Hernandez A, Morrison SJ, Clarke MF. Prospective identification of tumorigenic breast cancer cells. *Proc Natl Acad Sci U S A.* 2003; 100: 3983-8. <https://doi.org/10.1073/pnas.0530291100>.
 37. Ginestier C, Hur MH, Charafe-Jauffret E, Monville F, Dutcher J, Brown M, Jacquemier J, Viens P, Kleer CG, Liu S, Schott A, Hayes D, Birnbaum D, et al. ALDH1 is a marker of normal and malignant human mammary stem cells and a predictor of poor clinical outcome. *Cell Stem Cell.* 2007; 1: 555-67. <https://doi.org/10.1016/j.stem.2007.08.014>.
 38. Yin H, Glass J. The phenotypic radiation resistance of CD44+/CD24(-or low) breast cancer cells is mediated through the enhanced activation of ATM signaling. *PLoS One.* 2011; 6: e24080. <https://doi.org/10.1371/journal.pone.0024080>.
 39. Yin S, Xu L, Bandyopadhyay S, Sethi S, Reddy KB. Cisplatin and TRAIL enhance breast cancer stem cell death. *Int J Oncol.* 2011; 39: 891-8. <https://doi.org/10.3892/ijo.2011.1085>.
 40. Dontu G, Abdallah WM, Foley JM, Jackson KW, Clarke MF, Kawamura MJ, Wicha MS. In vitro propagation and transcriptional profiling of human mammary stem/progenitor cells. *Genes Dev.* 2003; 17: 1253-70. <https://doi.org/10.1101/gad.1061803>.
 41. Ayyanan A, Civenni G, Ciarloni L, Morel C, Mueller N, Lefort K, Mandinova A, Raffoul W, Fiche M, Dotto GP, Brisken C. Increased Wnt signaling triggers oncogenic conversion of human breast epithelial cells by a Notch-dependent mechanism. *Proc Natl Acad Sci U S A.* 2006; 103: 3799-804. <https://doi.org/10.1073/pnas.0600065103>.
 42. Malanchi I, Peinado H, Kassen D, Hussenet T, Metzger D, Chambon P, Huber M, Hohl D, Cano A, Birchmeier W, Huelsken J. Cutaneous cancer stem cell maintenance is dependent on beta-catenin signalling. *Nature.* 2008; 452:

- 650-3. <https://doi.org/10.1038/nature06835>.
43. Reya T, Clevers H. Wnt signalling in stem cells and cancer. *Nature*. 2005; 434: 843-50. <https://doi.org/10.1038/nature03319>.
 44. Koury J, Zhong L, Hao J. Targeting Signaling Pathways in Cancer Stem Cells for Cancer Treatment. *Stem Cells Int*. 2017; 2017: 2925869. <https://doi.org/10.1155/2017/2925869>.
 45. Dalerba P, Cho RW, Clarke MF. Cancer stem cells: models and concepts. *Annu Rev Med*. 2007; 58: 267-84. <https://doi.org/10.1146/annurev.med.58.062105.204854>.
 46. Dave B, Mittal V, Tan NM, Chang JC. Epithelial-mesenchymal transition, cancer stem cells and treatment resistance. *Breast Cancer Res*. 2012; 14: 202. <https://doi.org/10.1186/bcr2938>.
 47. Ponti D, Costa A, Zaffaroni N, Pratesi G, Petrangolini G, Coradini D, Pilotti S, Pierotti MA, Daidone MG. Isolation and in vitro propagation of tumorigenic breast cancer cells with stem/progenitor cell properties. *Cancer Res*. 2005; 65: 5506-11. <https://doi.org/10.1158/0008-5472.CAN-05-0626>.
 48. Dey N, Barwick BG, Moreno CS, Ordanic-Kodani M, Chen Z, Oprea-Ilie G, Tang W, Catzavelos C, Kerstann KF, Sledge GW, Jr., Abramovitz M, Bouzyk M, De P, et al. Wnt signaling in triple negative breast cancer is associated with metastasis. *BMC Cancer*. 2013; 13: 537. <https://doi.org/10.1186/1471-2407-13-537>.
 49. Duchartre Y, Kim YM, Kahn M. The Wnt signaling pathway in cancer. *Crit Rev Oncol Hematol*. 2016; 99: 141-9. <https://doi.org/10.1016/j.critrevonc.2015.12.005>.
 50. Kahn M. Can we safely target the WNT pathway? *Nat Rev Drug Discov*. 2014; 13: 513-32. <https://doi.org/10.1038/nrd4233>.