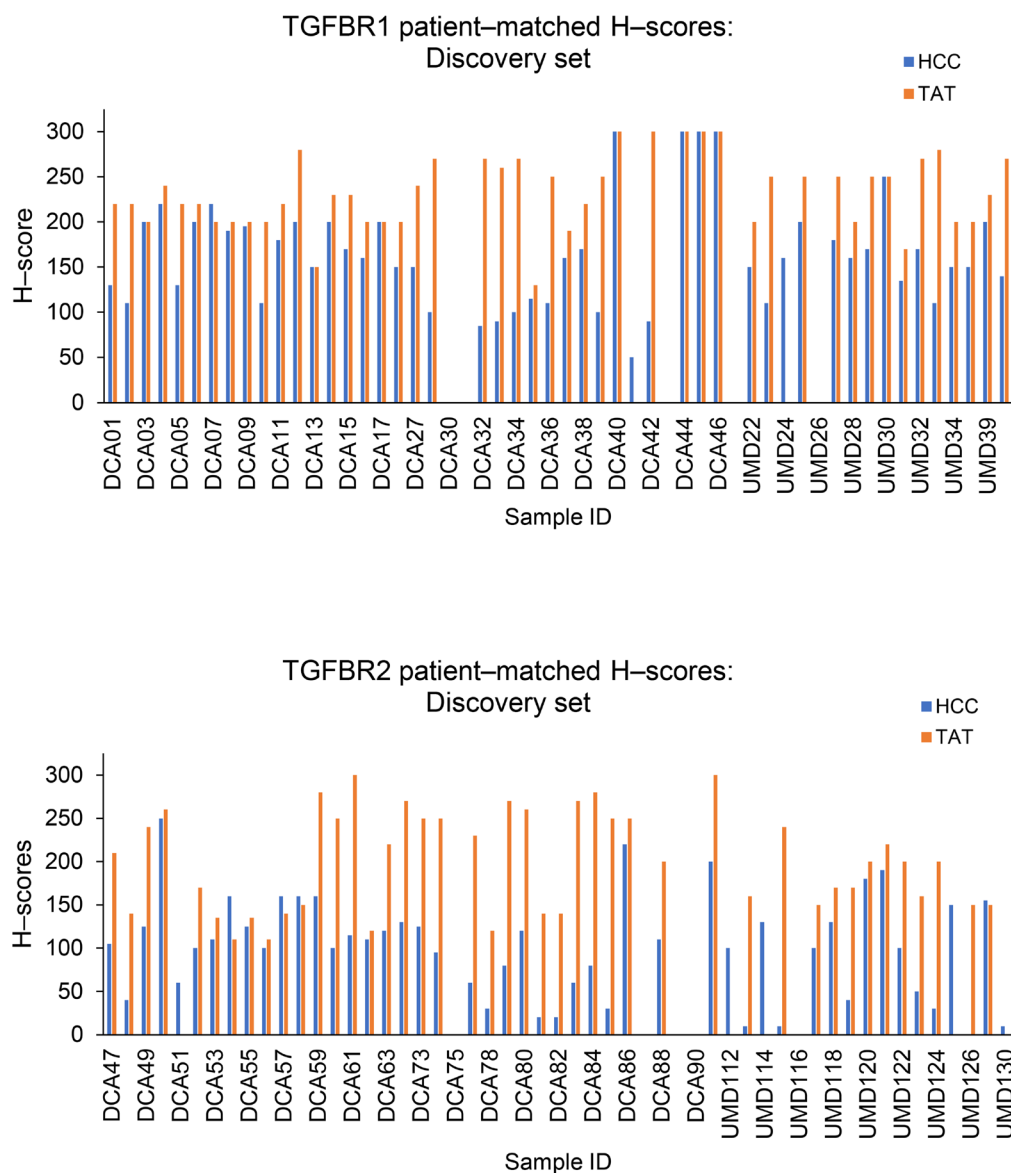
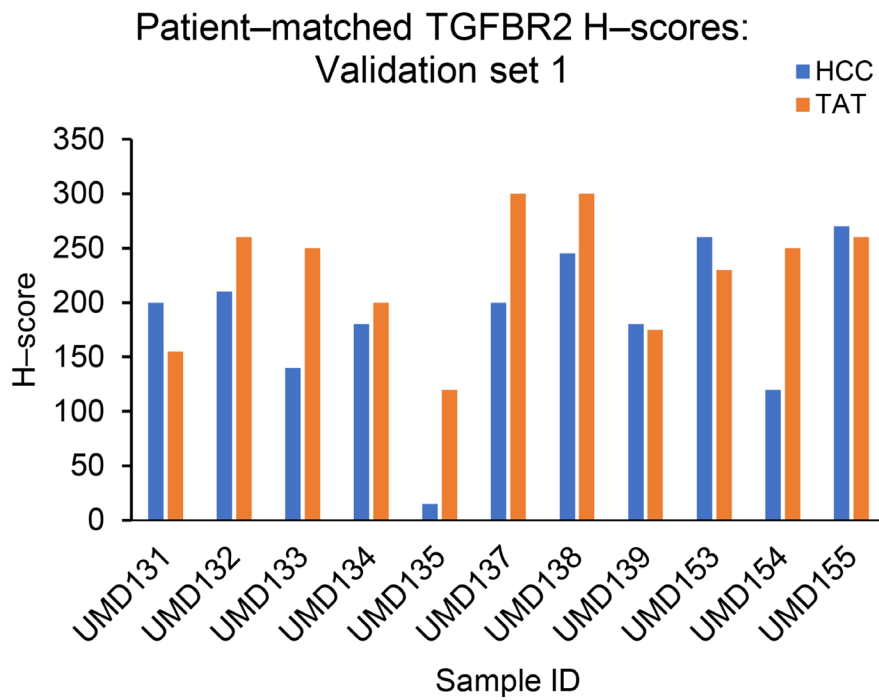
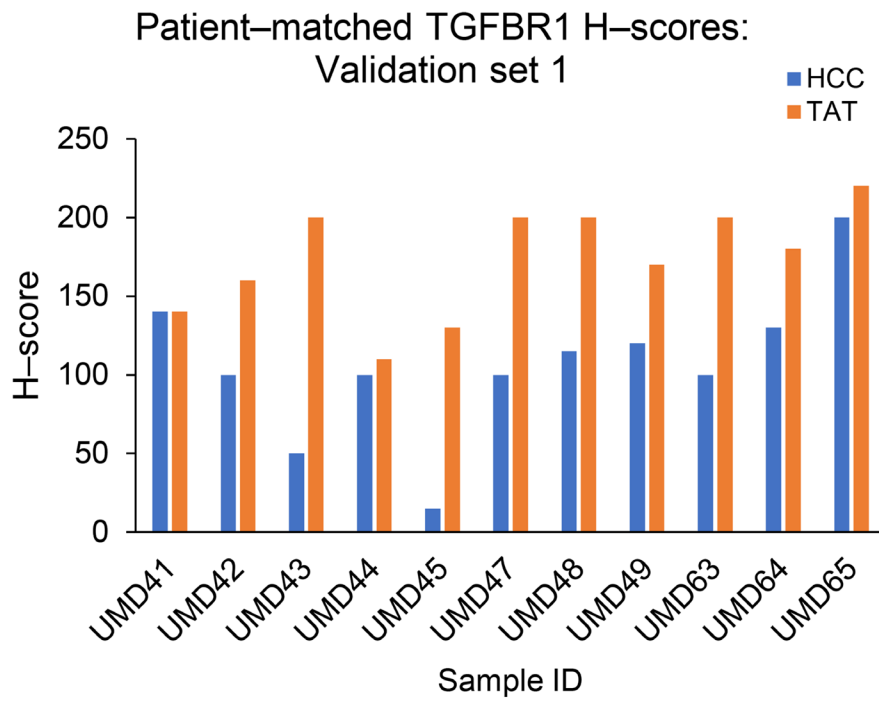


# Using quantitative immunohistochemistry in patients at high risk for hepatocellular cancer

## SUPPLEMENTARY MATERIALS

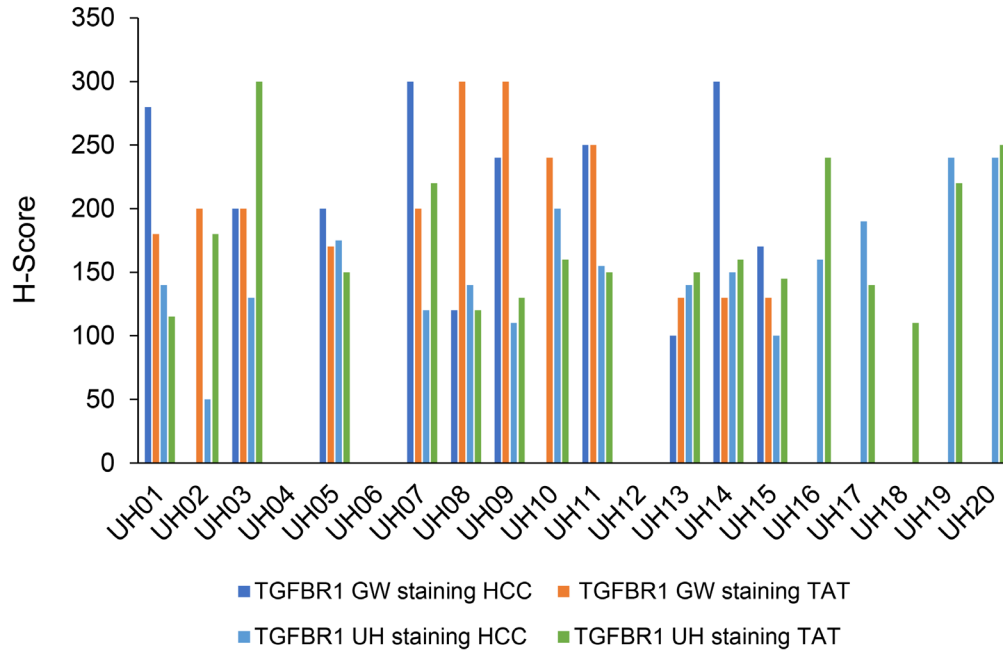


Supplementary Figure 1: Patient-matched H-scores for HCC and tumor-adjacent tissue from the discovery set.

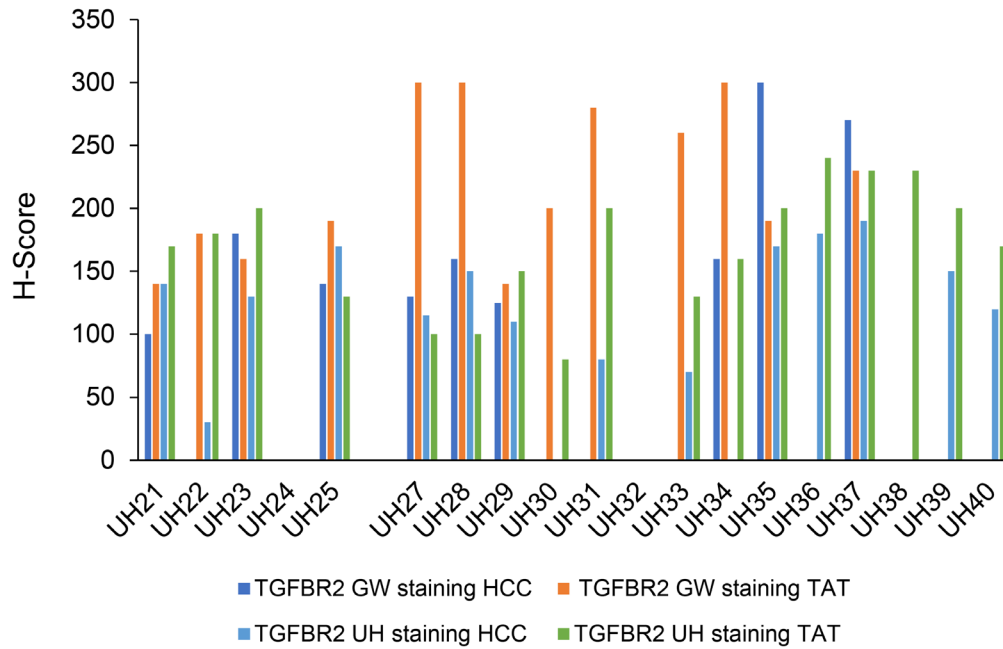


Supplementary Figure 2: Patient-matched H-scores for HCC and tumor-adjacent tissue from validation set 1.

Patient-matched TGFBR1 H-scores:  
Validation set 2



Patient-matched TGFBR2 H-scores:  
Validation set 2



Supplementary Figure 3: Patient-matched H-scores for HCC and tumor-adjacent tissue from validation set 2.